



Climate Action and Resilience with the City of Olympia

Natalie Weiss, Climate Resilience Coordinator

AHSS LIO

September 19, 2024



CLIMATE
ACTION AND
RESILIENCE

Agenda

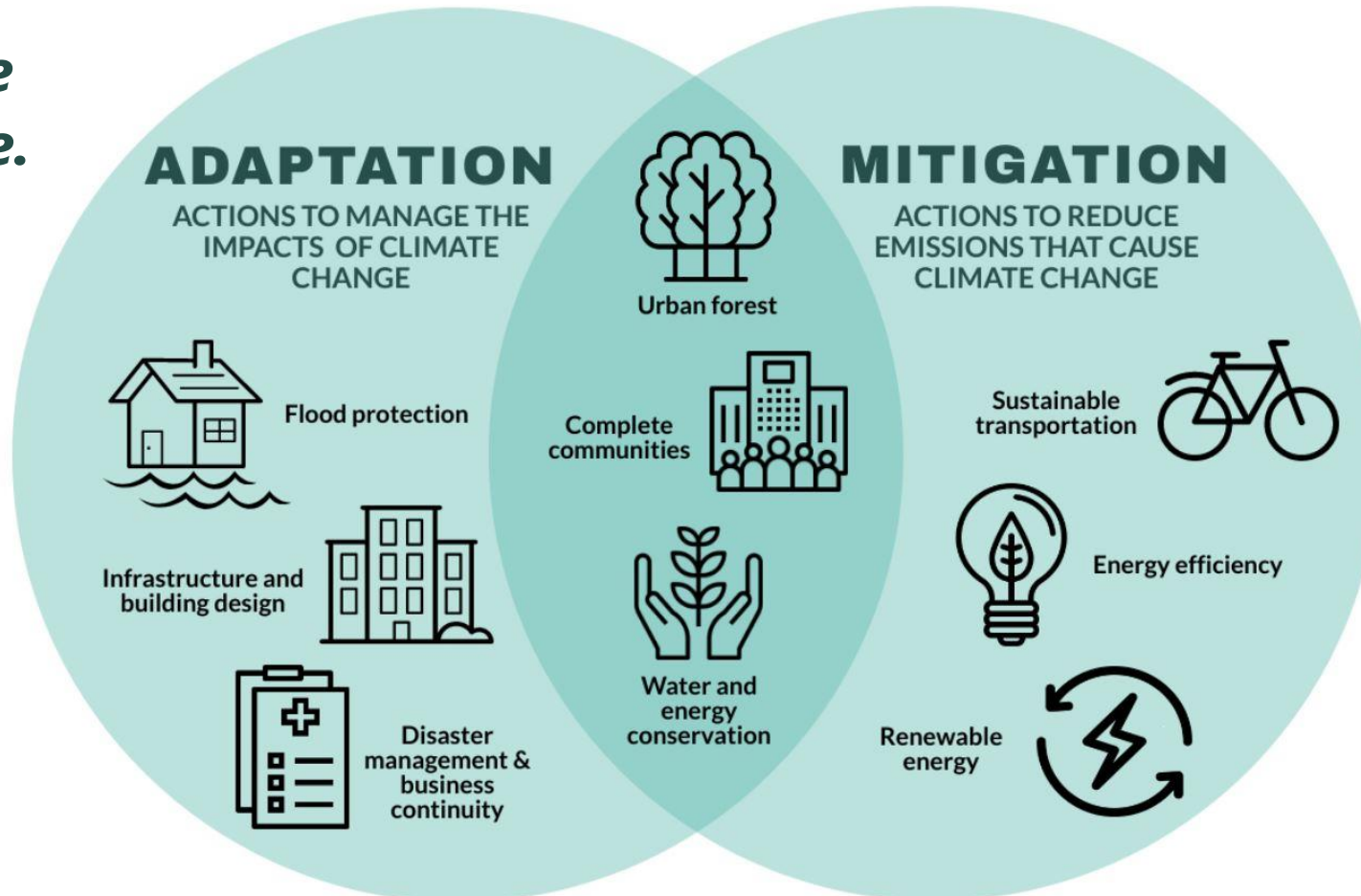
- About Us: The Climate Team at City of Olympia
- Climate Element of 2025 Comprehensive Plan
- Sea Level Rise Adaptation
- Energize Olympia



City of Olympia's Climate Team Goals

Manage the unavoidable.

Avoid the unmanageable.



How do we accomplish our goals?



Assessment and Planning

- Climate Element 2025 Comp Plan



Infrastructure and Capital Investment

- Sea Level Rise Collaborative



Programs and Services

- Energize Olympia
- Switch is On!



Regulatory and Code Changes

- Flood Reduction Ordinance



Funding and Financing

- Sea Level Rise Collaborative
- Building retrofits
- EV Charging



Capacity Building

- Climate Element 2025 Comp Plan



Advocacy and Public Outreach

- Newsletters
- Workshops
- Open Houses
- Tabling

Let's dive into a few examples...



Assessment and Planning

- Climate Element 2025 Comp Plan



Infrastructure and Capital Investment

- Sea Level Rise Collaborative



Programs and Services

- Energize Olympia
- Switch is On!



Regulatory and Code Changes

- Flood Reduction Ordinance



Funding and Financing

- Sea Level Rise Collaborative
- Building retrofits
- EV Charging



Capacity Building

- Climate Element 2025 Comp Plan



Advocacy and Public Outreach

- Newsletters
- Workshops
- Open Houses
- Tabling



Climate Element – 2025 Comprehensive Plan

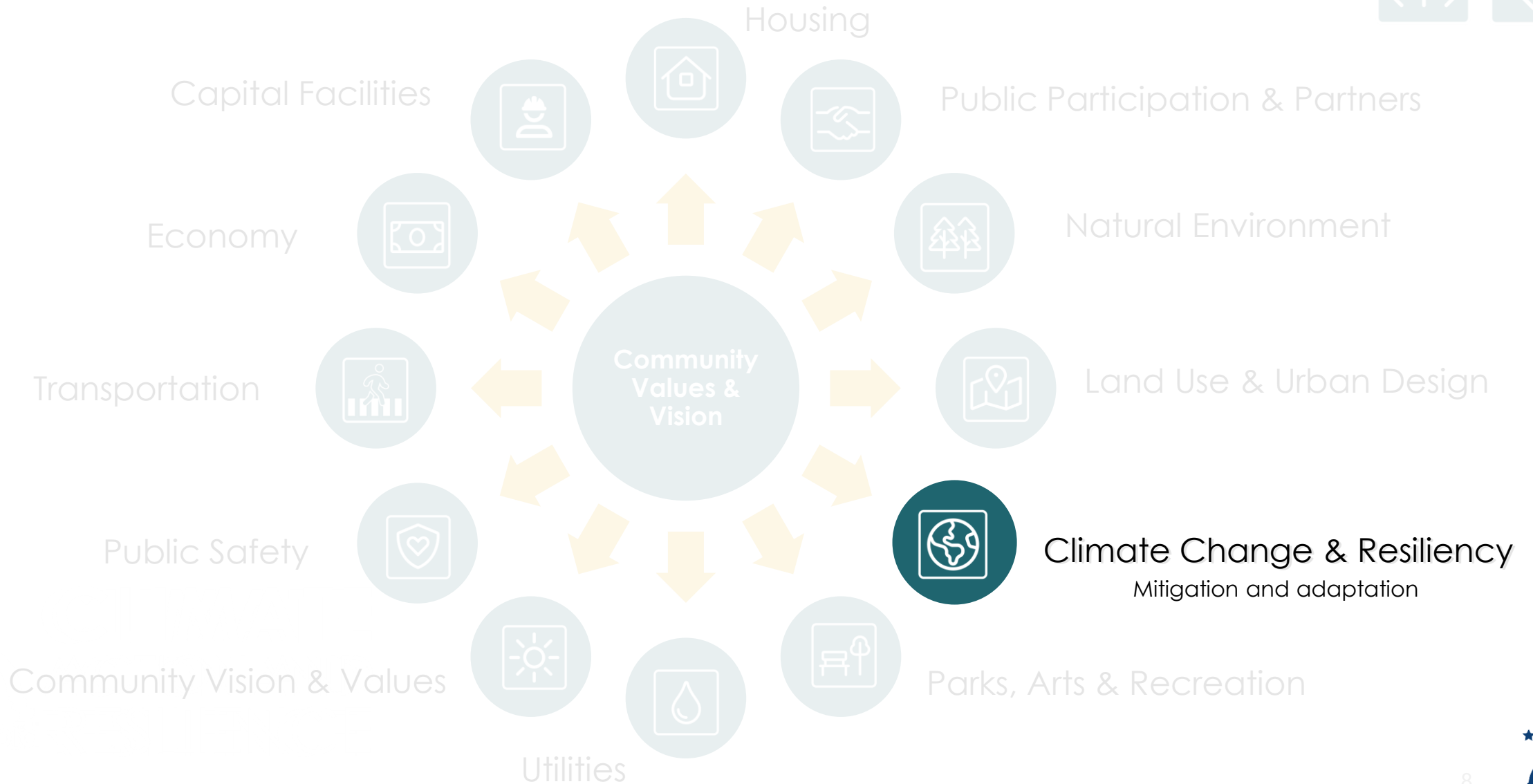
Olympia 2045 Chapters

Equity and health are addressed in every chapter.



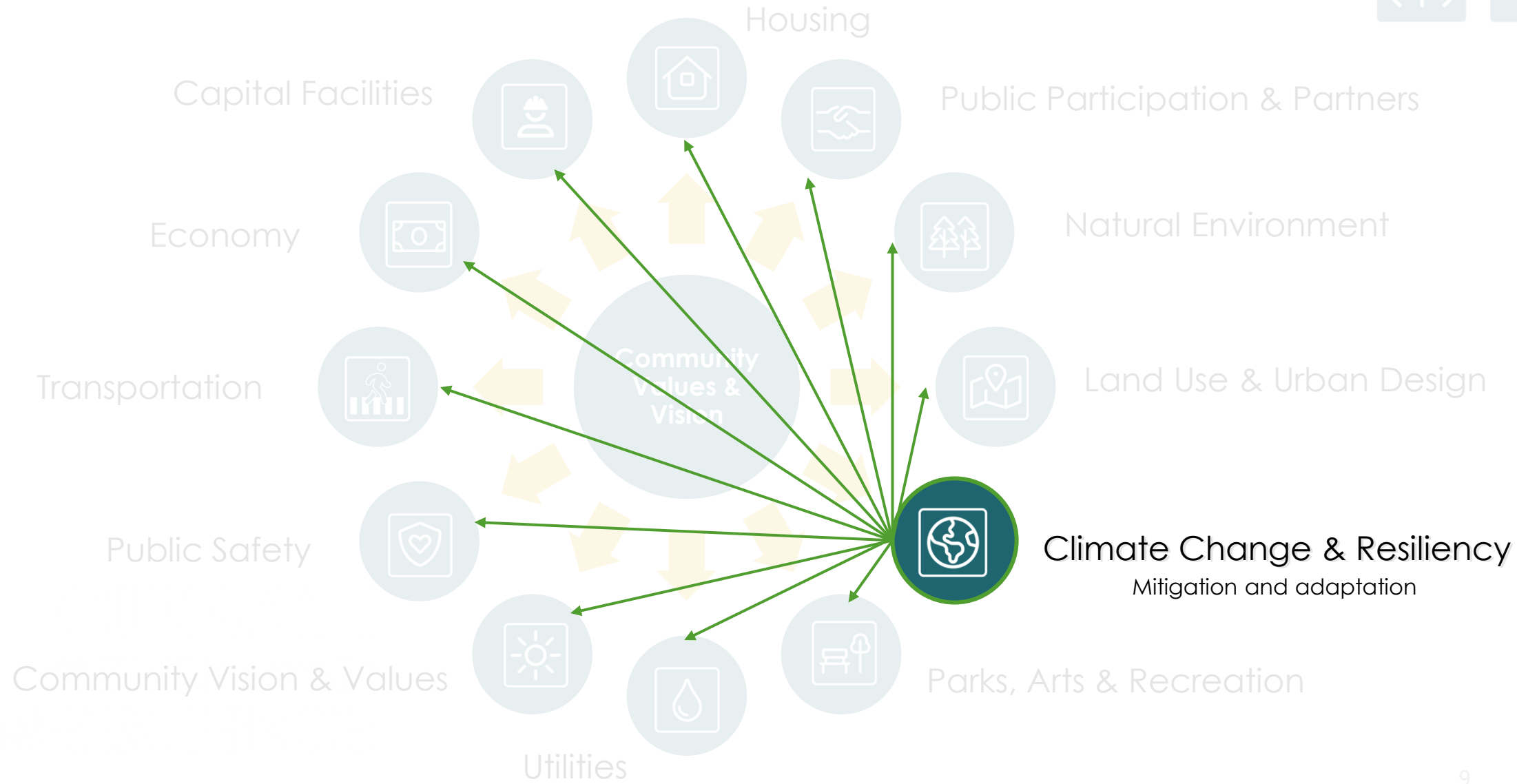
The Climate Chapter

Equity and health are addressed in every chapter.



Climate Integration with All Chapters

Equity and health are addressed in every chapter



The Climate Advisory Committee

Staff members from:

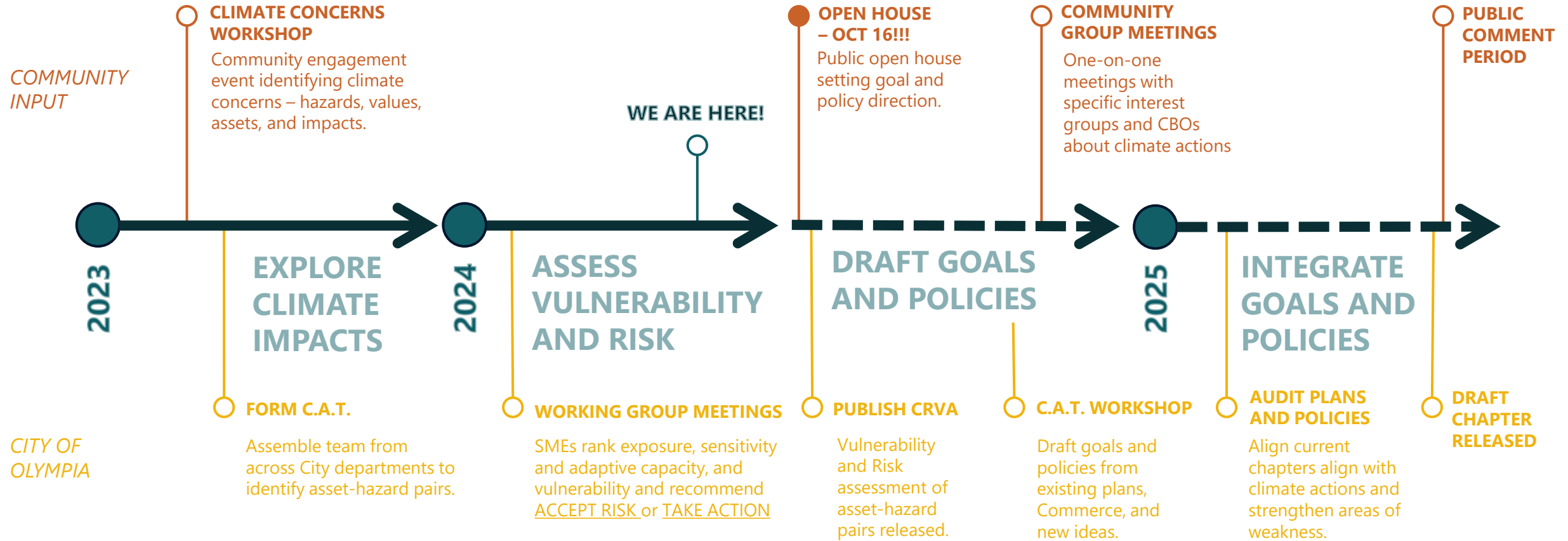
- Economic Development
- Emergency Management
- Equity
- Housing
- Natural Environment
- Parks
- Transportation
- Utilities
- Waste Resources
- Squaxin Island Tribe*
- Olympia Planning Commission*

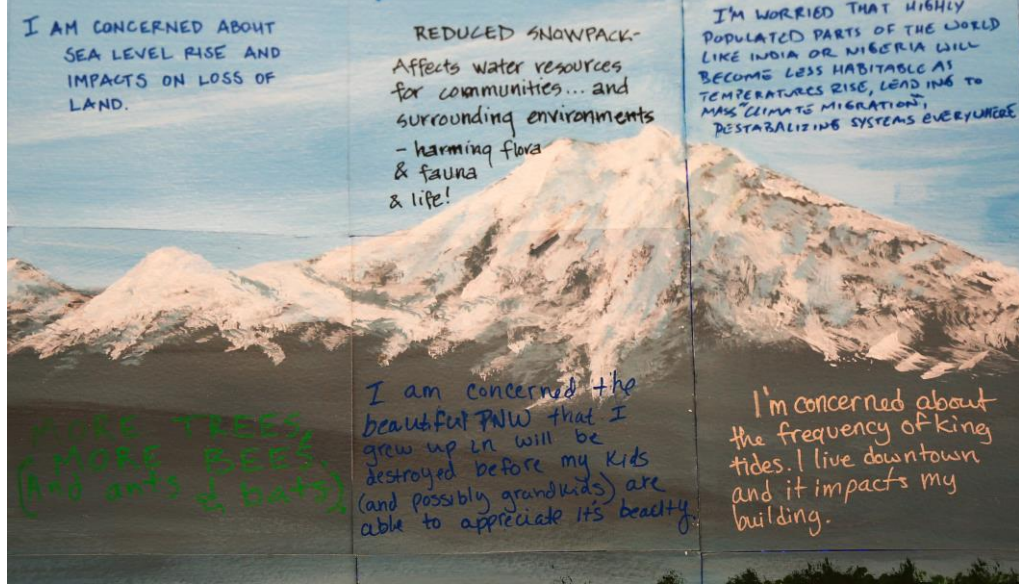
→ Builds internal capacity and ownership



* Not a City of Olympia Department

Comprehensive Plan Development





Climate Chapter Open House Olympia Center - Oct 16!

- Holding a public open house to further shape the comprehensive plan chapter development
 - Educate and inform climate impacts on specific sectors
 - Introduce potential strategies and actions the City can take
 - Brainstorm additional actions of interest



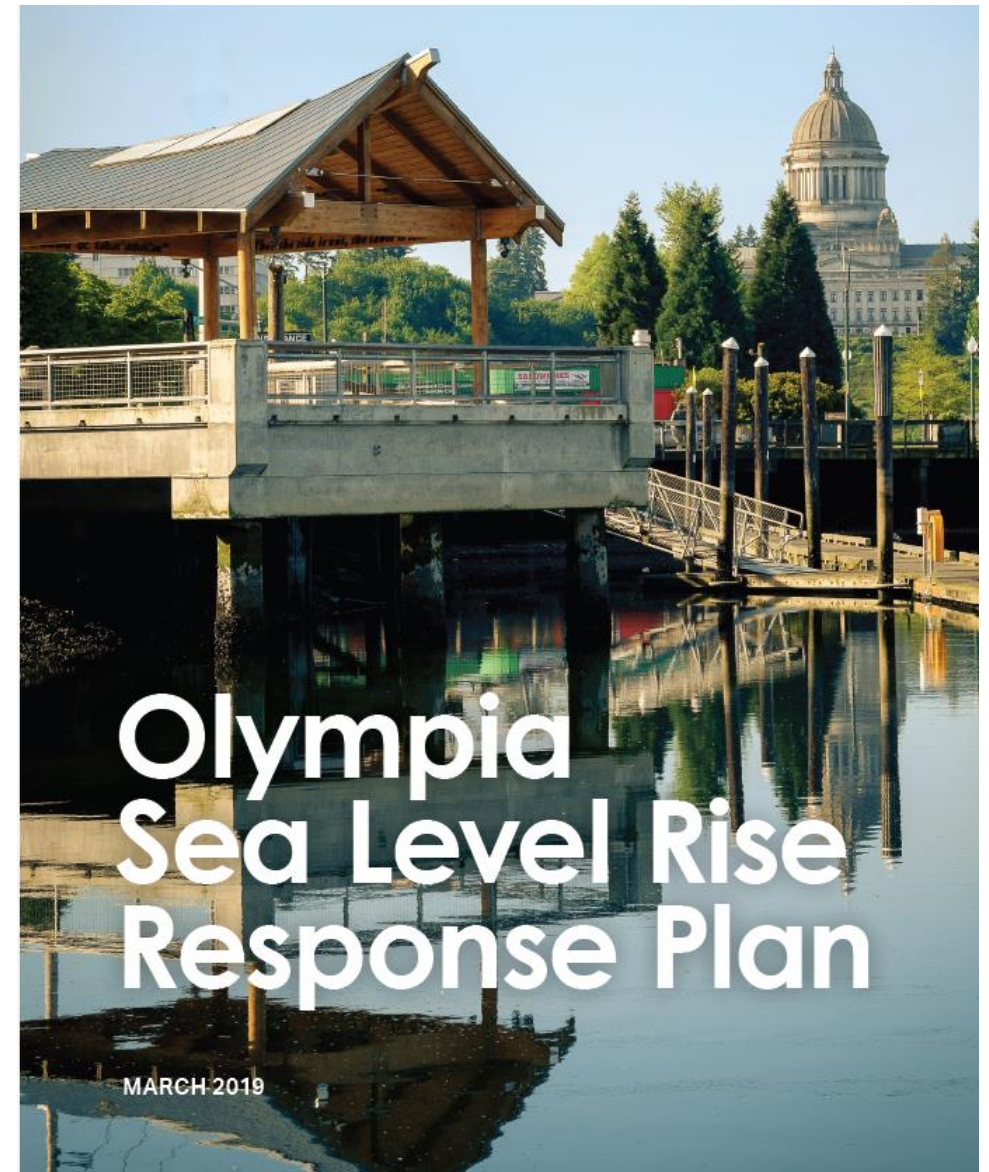
Learn more at olympiawa.gov/Climate2045

A photograph showing several workers in high-visibility orange and yellow safety gear wading through floodwaters on a city sidewalk. The water is murky and reflects the workers' clothing. A semi-transparent green and blue rectangular overlay is positioned in the center of the image, containing the text 'Sea Level Rise Adaptation'.

Sea Level Rise Adaptation

SLR Plan (2019)

- Guiding document for all sea level rise planning
- SLR Plan includes:
 - Science and Projections
 - Vulnerability and Risks of assets
 - Adaptation Strategies
 - Needed Actions and Next Steps
 - Estimated Costs and Resources
 - Implementation Schedules

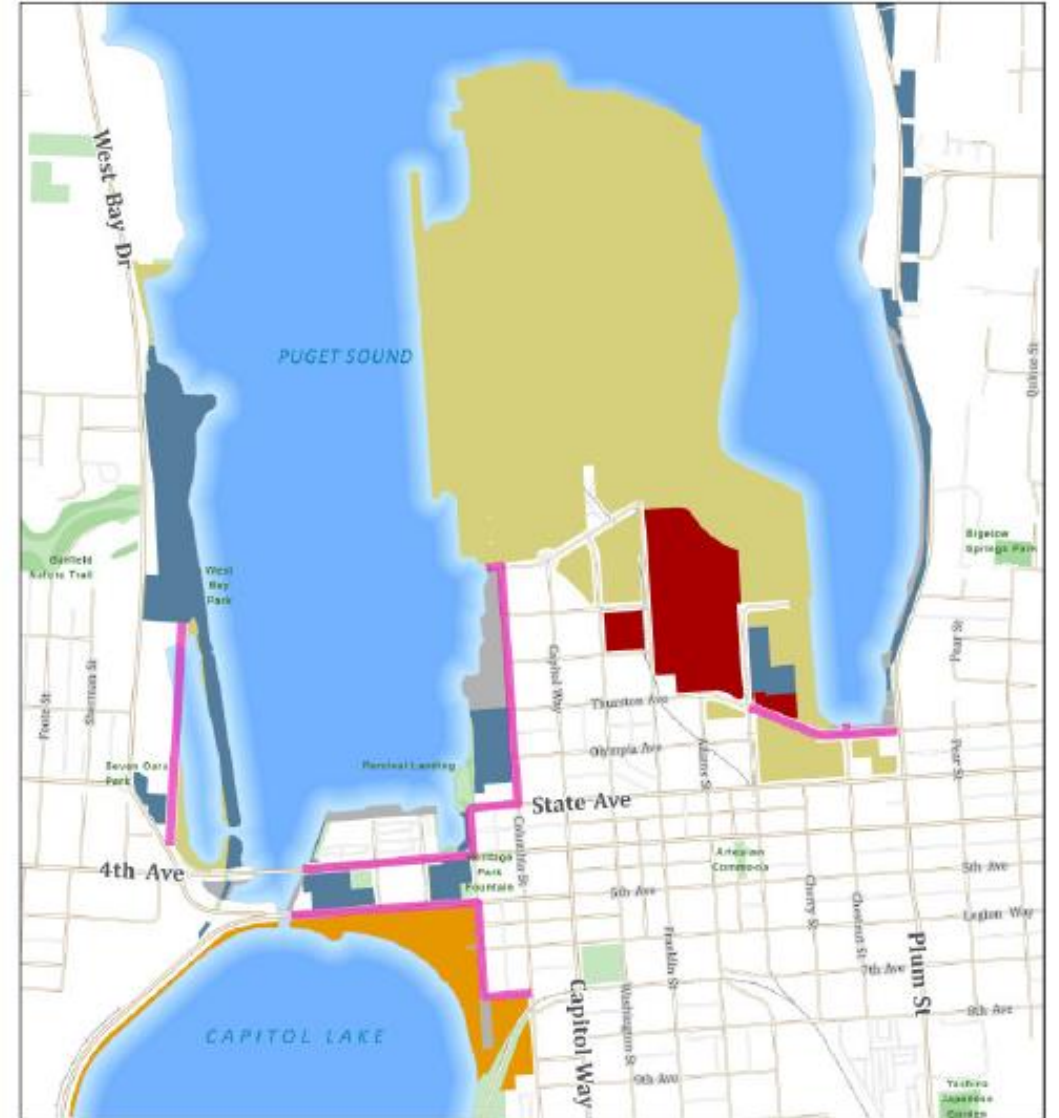


SLR Collaborative

- Established the SLR Collaborative to implement the SLR Plan
 - City of Olympia
 - Port of Olympia
 - LOTT Clean Water Alliance
 - Department of Enterprise Services*
 - Squaxin Island Tribe*

Shoreline Ownership

- Right of Way
- Port of Olympia
- City of Olympia
- LOTT
- Washington Department of Natural Resources
- Washington Department of Enterprise Services



SLR Projections

Near Term Strategies (2019-2024)

Interventions to adapt to low sea level rise (less than 6 inches)

Mid Term Strategies (2025-2050)

Interventions to adapt moderate sea level rise (up to 24 inches)

Long Term Strategies (2050-2100)

Interventions to adapt high sea level rise (up to 68 inches)



Physical Interventions for SLR

Raised Buildings



Living Shorelines



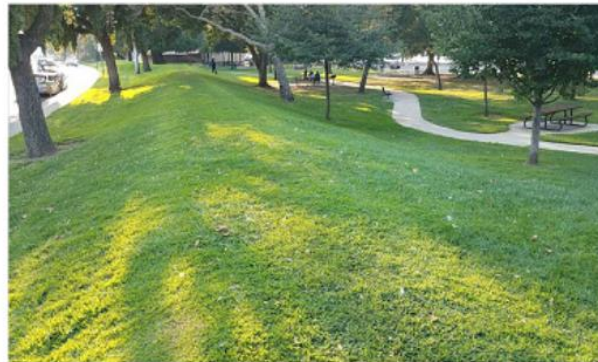
Temporary



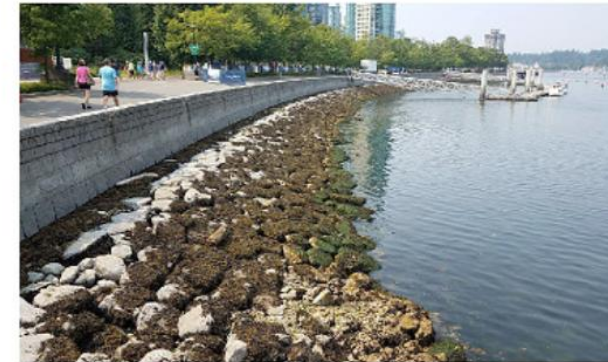
Raised Streets



Raised Landscaping



Flood Walls





Energize Olympia – Ductless Heat Pump Program



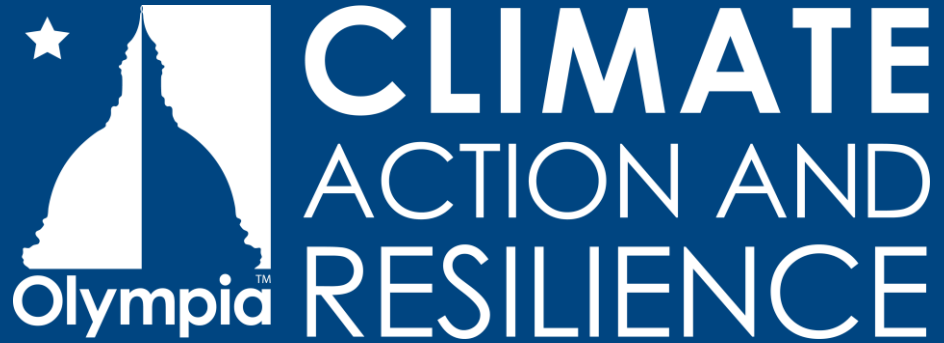
Energize Olympia

A ductless heat pump purchasing program that offers exclusive benefits to Olympia residents:

- Financing and incentives
- Installation and free site assessment from vetted installer

Applications open now!

Learn more at olympiawa.gov/energize



Thank you!

Get in touch!

Natalie Weiss

nweiss@ci.olympia.wa.us

(360) 570-5828