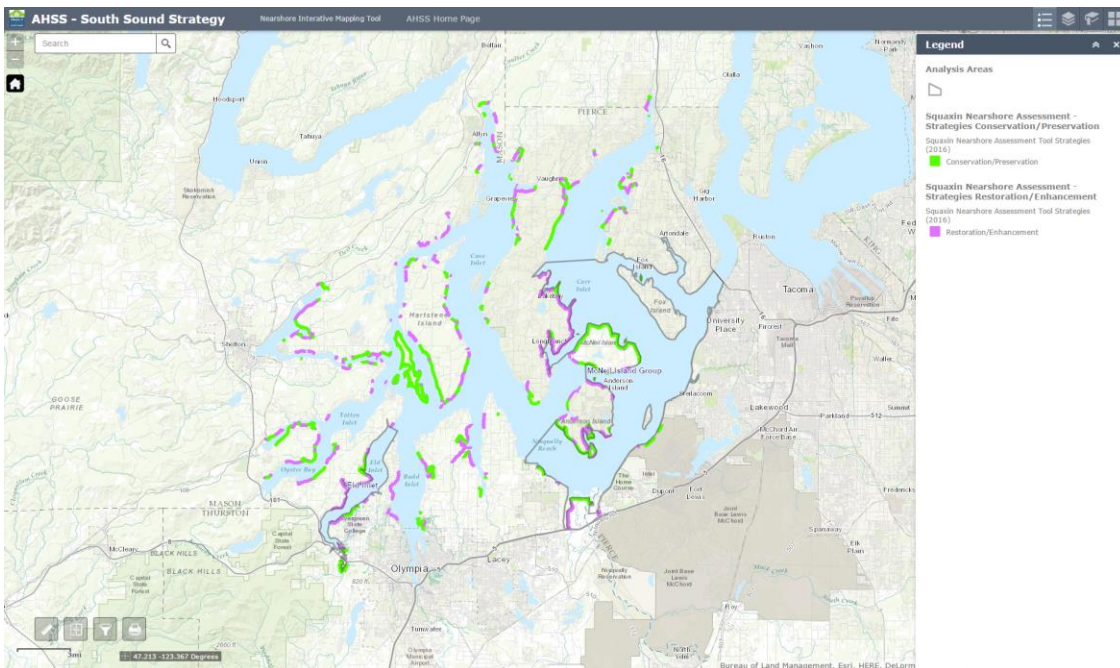
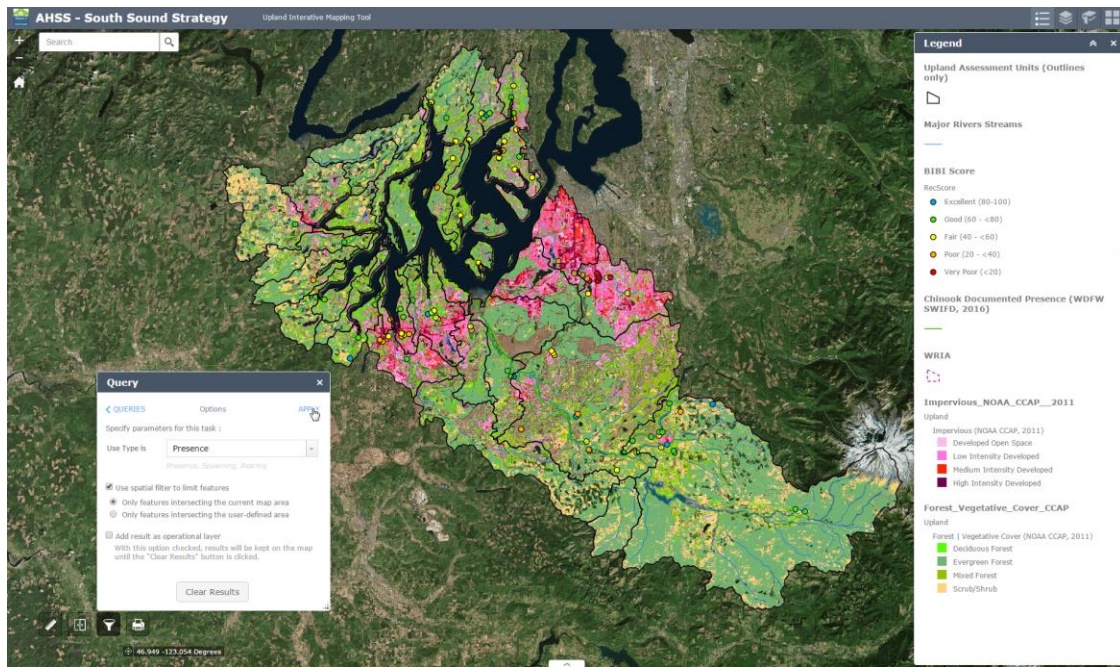


AHSS South Sound Strategy - Interactive Mapping Tool

User Guide



Prepared by: ESA
Last updated: December 30, 2016

Accessing the Tool

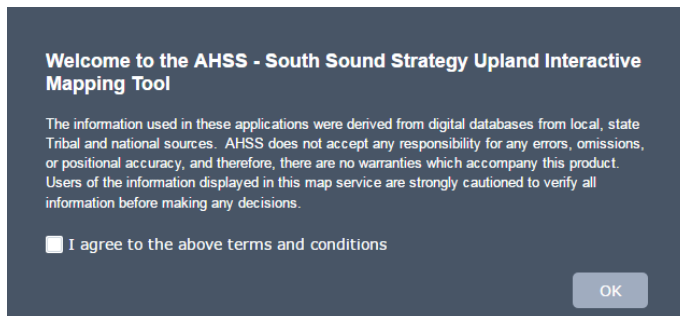
There are two web applications developed to support the South Sound Strategy. To access:

Nearshore/Marine Interactive Mapping Tool: <http://bit.ly/2iHczhg>

Upland/Terrestrial Interactive Mapping Tool: <http://bit.ly/2ipuYmy>

Features

Both web applications have similar features and functionality. When you first access the site, there is a welcome banner with a site disclaimer. Check the I agree to the above terms and conditions box and click OK to enter the site.



Navigation

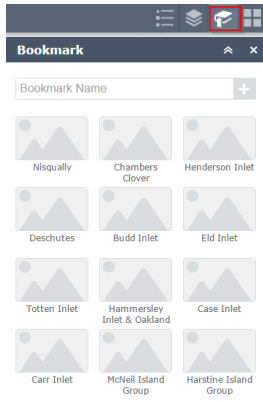
To zoom in/out of the tool, you can either use your mouse scroll bar or double-click to zoom. There are also zoom controls located in the top left-hand corner of the tool:



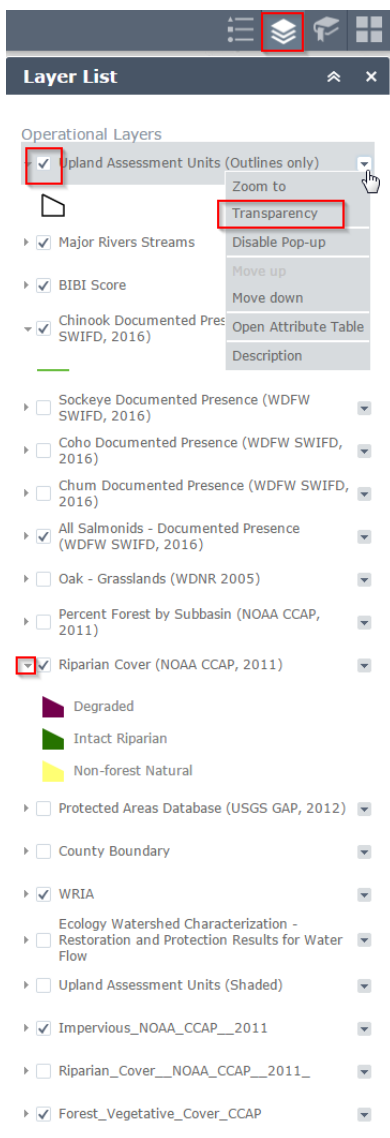
Click the home button (Default Extent) to zoom out to the full extent of the project extent. For search, type in a location (for example, Shelton) and click on the result to zoom to a geographic location on the map.

Bookmarks

Additionally, there are spatial bookmarks that will zoom to any analysis unit. To access, click the bookmark icon in the top right-hand corner of the application:



Feature Access



Use the Layer List to turn layers on or off, change transparency, access attribute information and get additional details about a layer. Click the small arrows to the left of the layer to access the legend. To view the full legend for layers displayed, click the legend icon below.



Click on a feature to access its attribute information (if applicable):

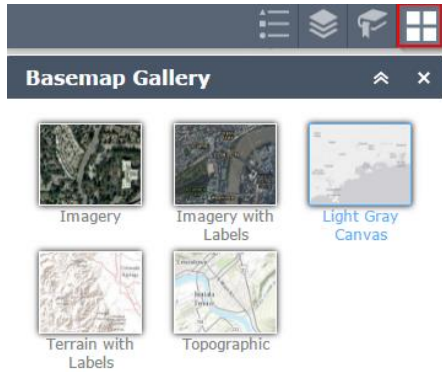
(1 of 5)

BIBI Score: WRIA 13 - Deschutes

FID_BIBI_O	1,084
Row	1,085.00
Site_ID	2,011.00
WRIA	WRIA 13 - Deschutes
Basin	Deschutes Prairie Basin
Subbasin	Woodard Creek Subbasin
Stream	Woodard Creek
Agency	Thurston County
Project	Environmental Health
Site_Code	WoodardThCoHealth
Latitude	47.09
Longitude	-122.86
Zoom to	

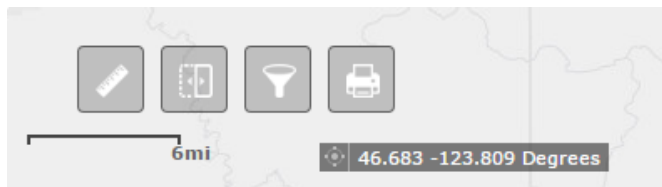
Basemaps

Click the Basemap icon to access aerial imagery, topographic, streets and terrain base layers.



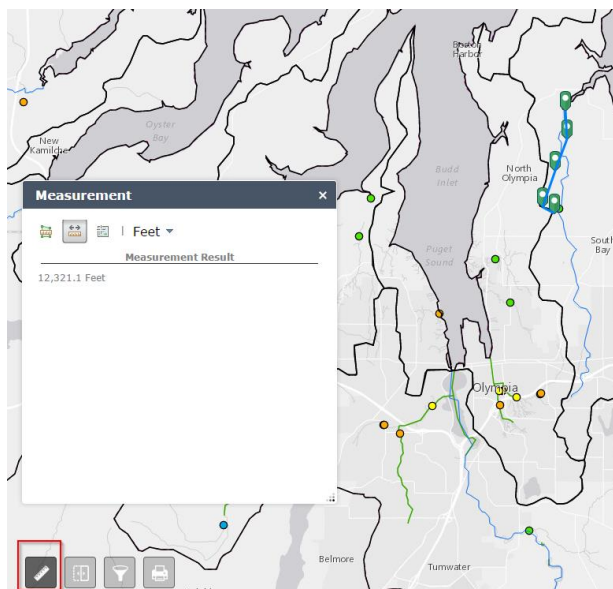
Other Features

In the bottom left-hand corner of the application, there are additional buttons for measurements, swipe, filter and print along with a lat/long feature for obtaining lat/long coordinates for any given location.



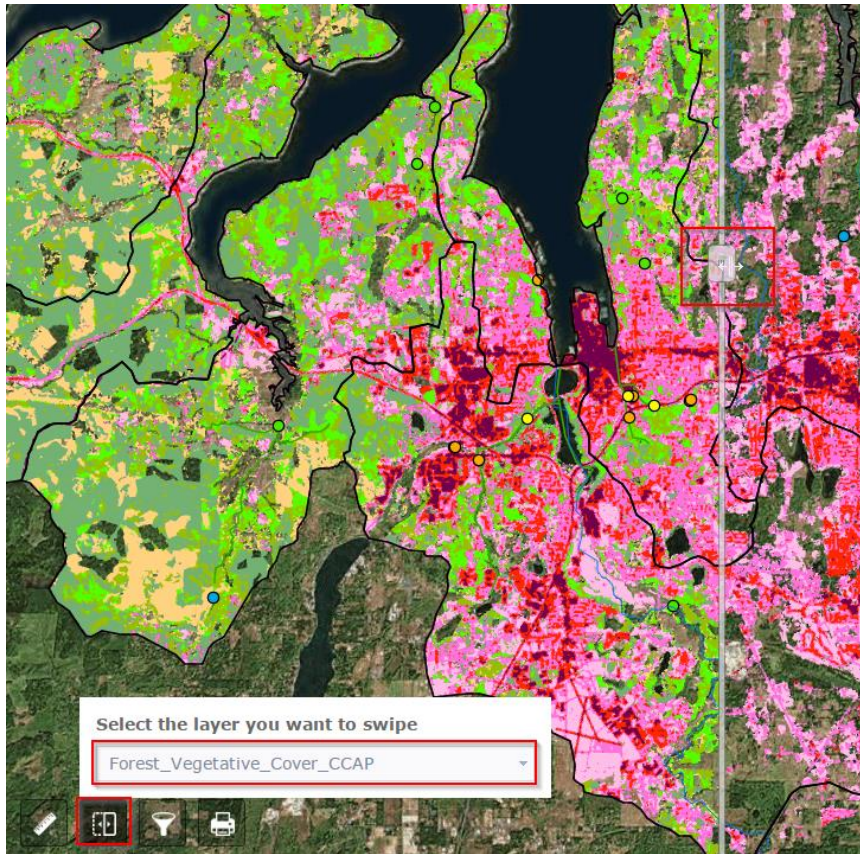
Measurement

Click the ruler to access measurement features (areas and lengths):



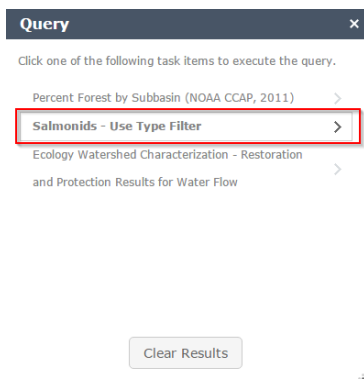
Swipe

Use the swipe tool to quickly view a selected layer and what is beneath it when swiped:



Query

Click the query button to access a few pre-defined queries for some layers. For example, if I wanted to view all salmonid rearing areas, I would select the Salmonids – Use Type Filter:



Then I would specify the use type as “Rearing” | Click the “User spatial filter to limit features” | Click Apply:

Query [X]

< QUERIES Options **APPLY**

Specify parameters for this task :

Use Type is **Rearing** [v]
Presence, Spawning, Rearing

Use spatial filter to limit features

Only features intersecting the current map area

Only features intersecting the user-defined area

Add result as operational layer
With this option checked, results will be kept on the map until the "Clear Results" button is clicked.

Clear Results

Print (*in development*)

Click the Print button to print a PDF version of the view and data layers displayed on the tool:



Print [X]

Map Title: AHSS - South Sound Strategy

Layout: A3 Portrait [v]

Format: PDF [v]

Advanced [v] Print