

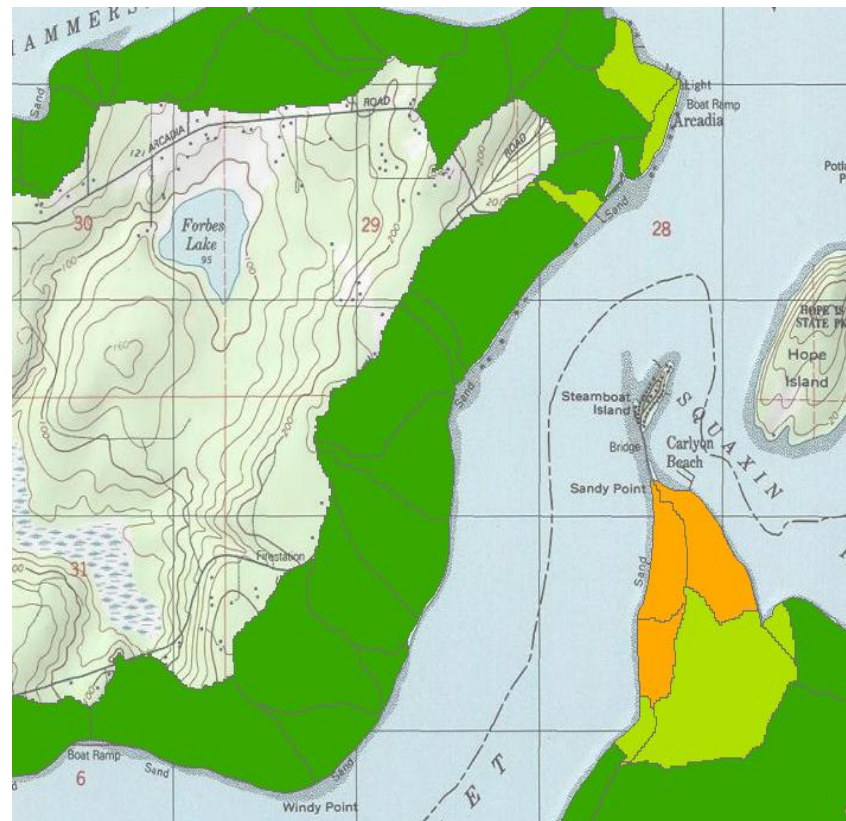
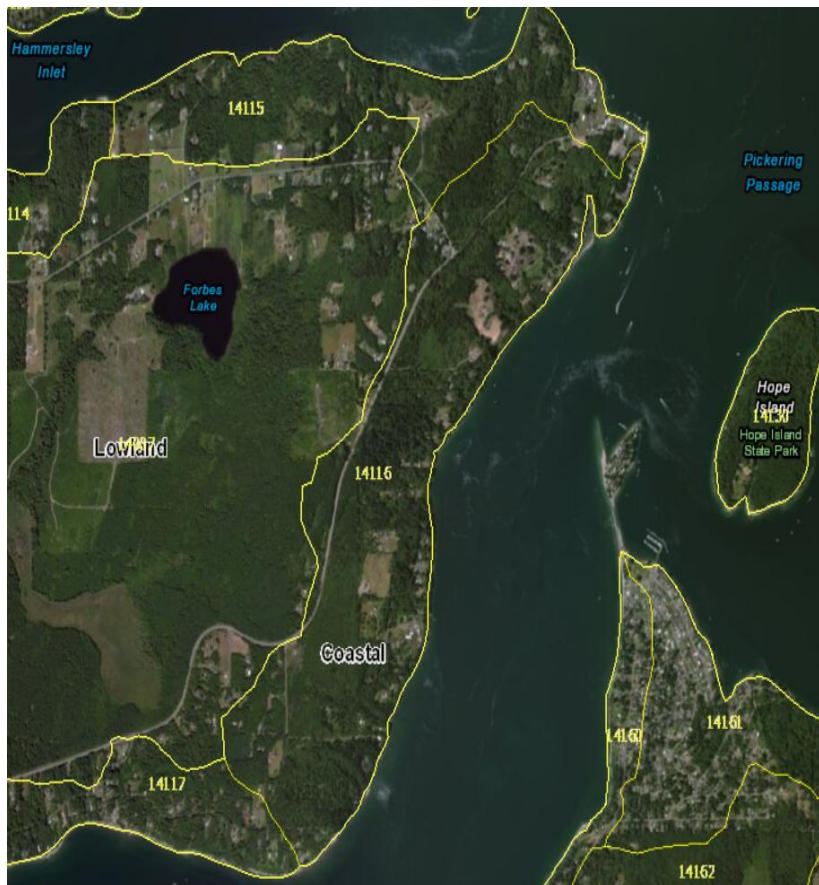
South Puget Sound Nearshore Assessments and Restoration Strategies



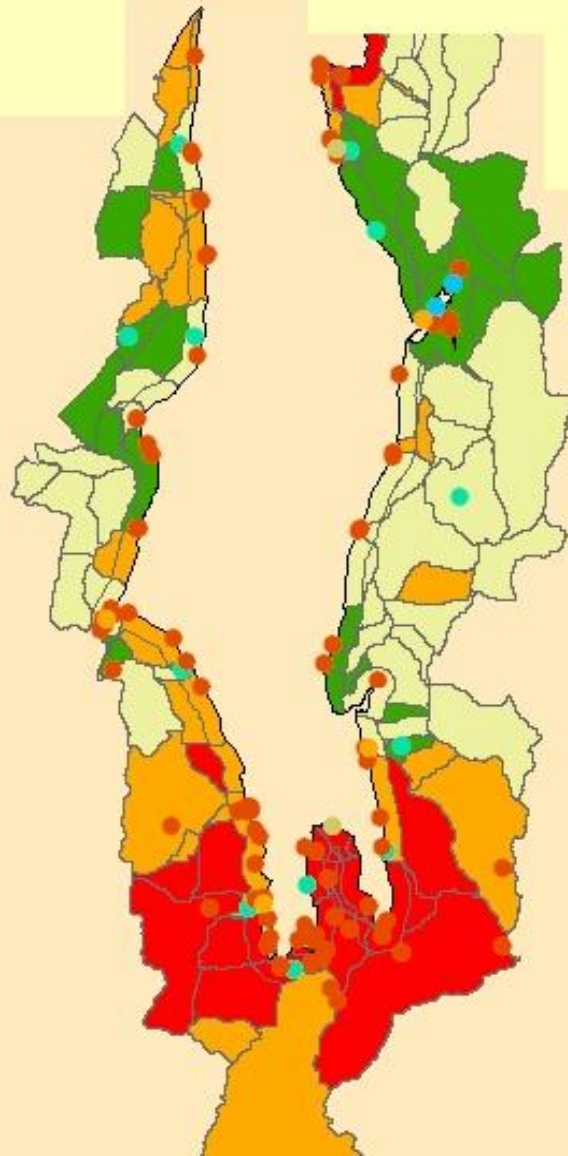
Budd Inlet Pilot

- Conceptual Model
- Analysis
- Strategy

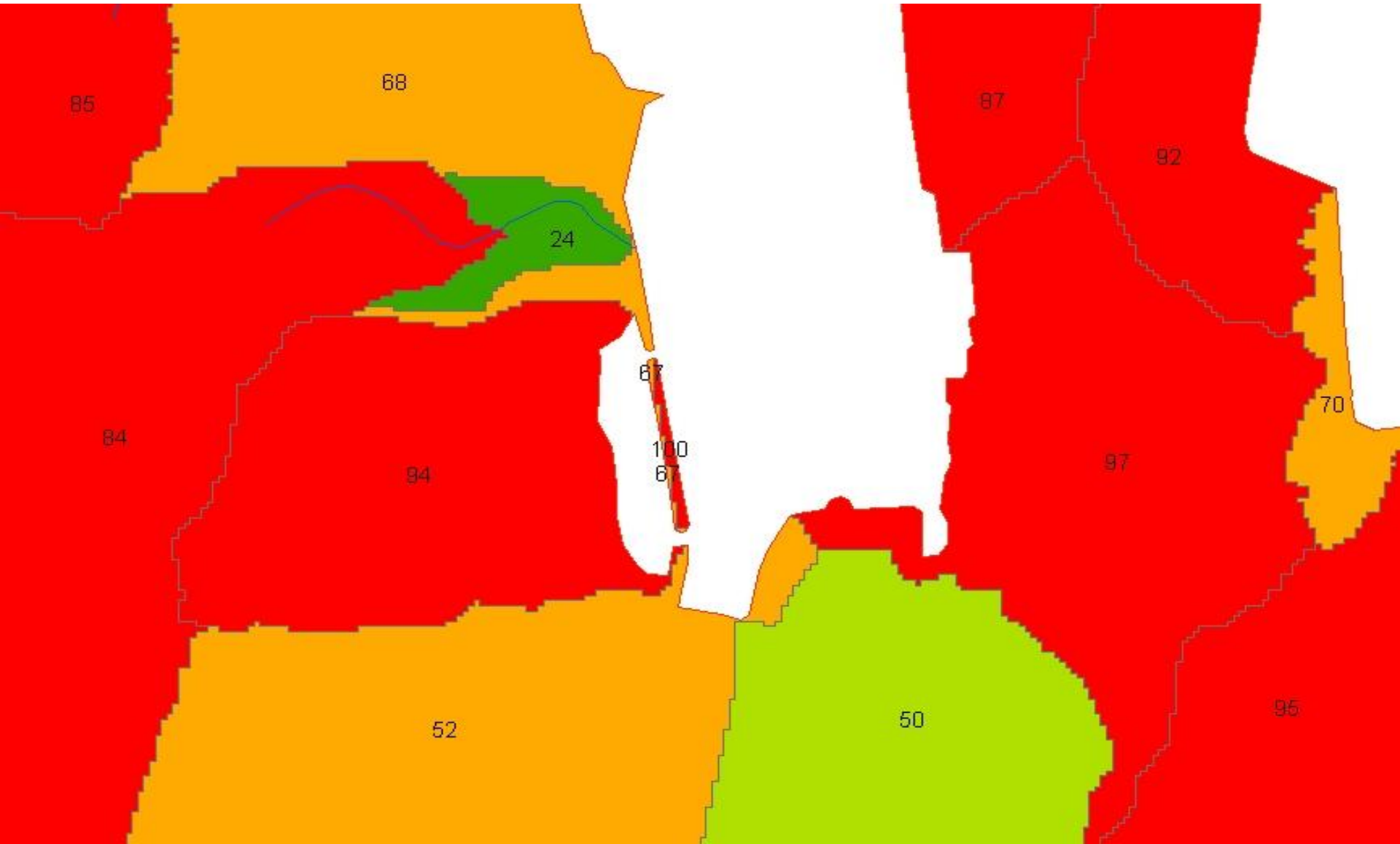
Unit of Analysis Catchment



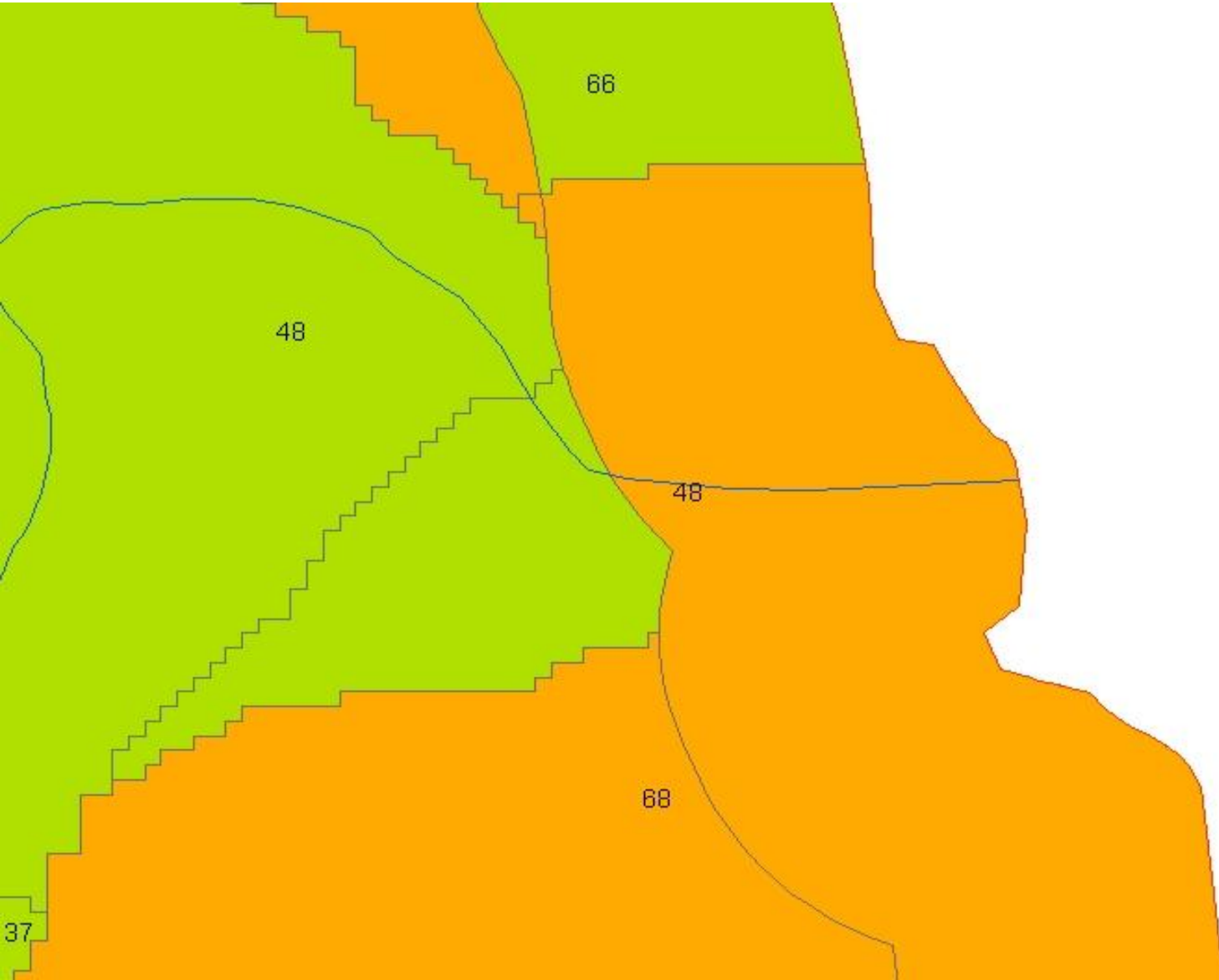
Strategy



Neighborhood



Uplands



Restoration

Strategies

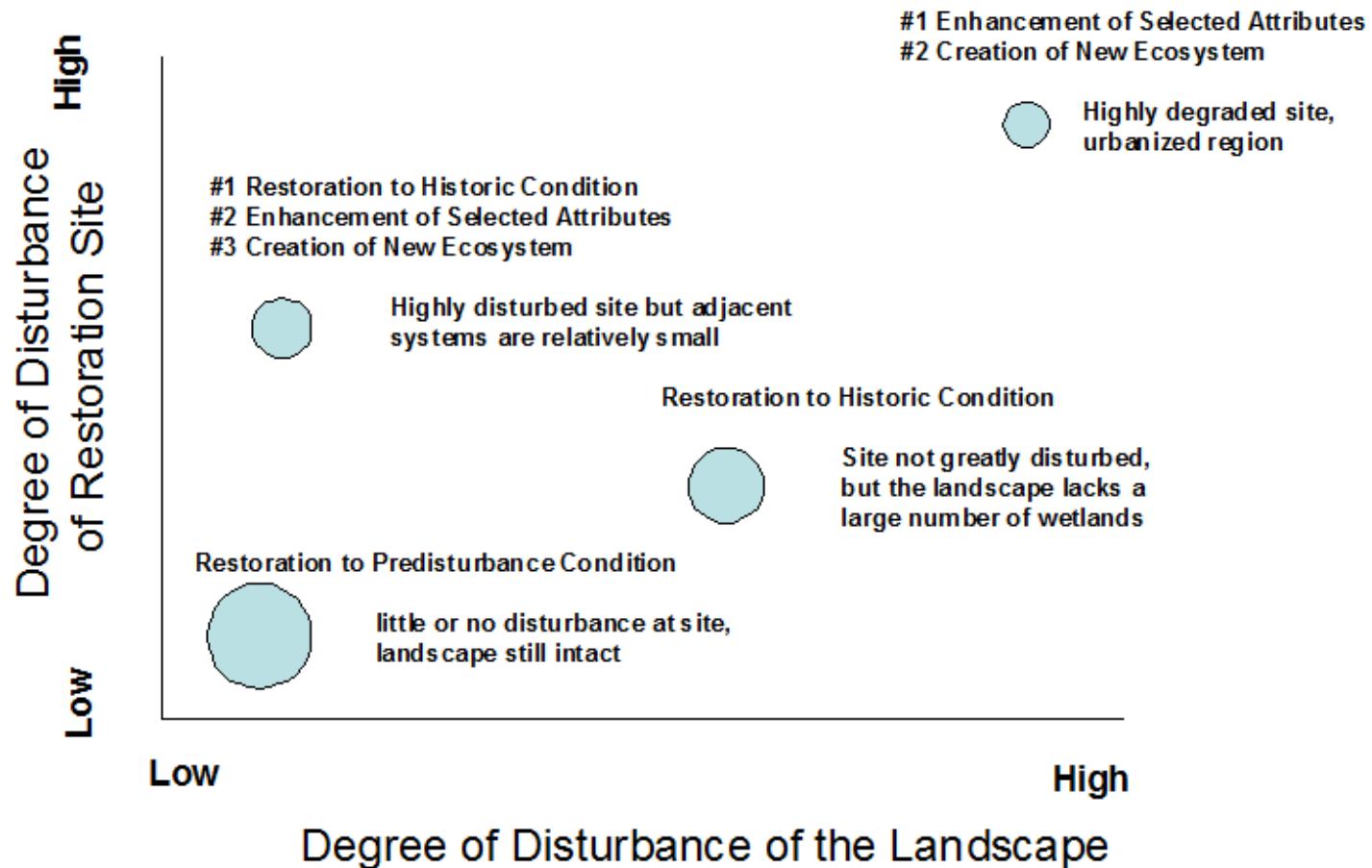
Strategy	Definition
Conservation	Maintenance of biodiversity (Meffe et al. 1994).
Creation	Bringing into being a new ecosystem that previously did not exist on the site (NRC 1992).
Enhancement	Any improvement of a structural or functional ecosystem attribute (NRC 1992).
Restoration	Return of an ecosystem to a close approximation of its previously existing condition (e.g., Lewis 1991, NRC 1992).
Protection / Preservation	Formal exclusion of activities that may negatively affect the structure and/or functioning of habitats or ecosystems.

Landscape Scale

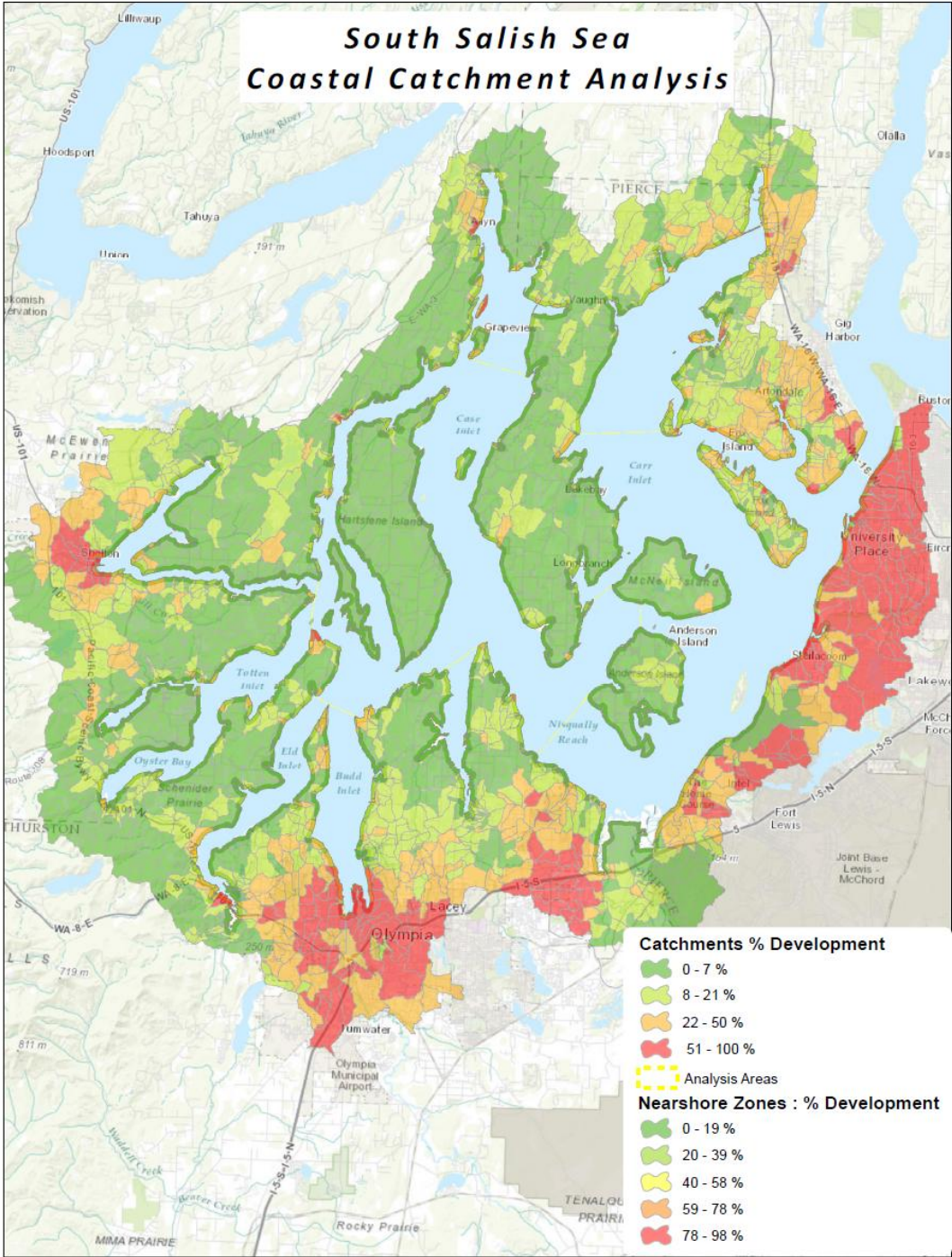
Site Scale

Level of Disturbance	L	M	H
H	Restore Enhance	Enhance Restore	Create Enhance
M	Restore Enhance Conserve Preserve	Enhance Restore Conserve	Enhance Create
L	Conserve Preserve	Conserve Enhance Restore Preserve	Enhance Conserve

(Johnson et al. 2003 page 19, figure 2.3): Restoration Strategies for Estuarine Systems Relative to Disturbance Levels at the Site and in the Landscape (from Shreffler and Thom 1993). The relative chance of success increases with the size of the dot.



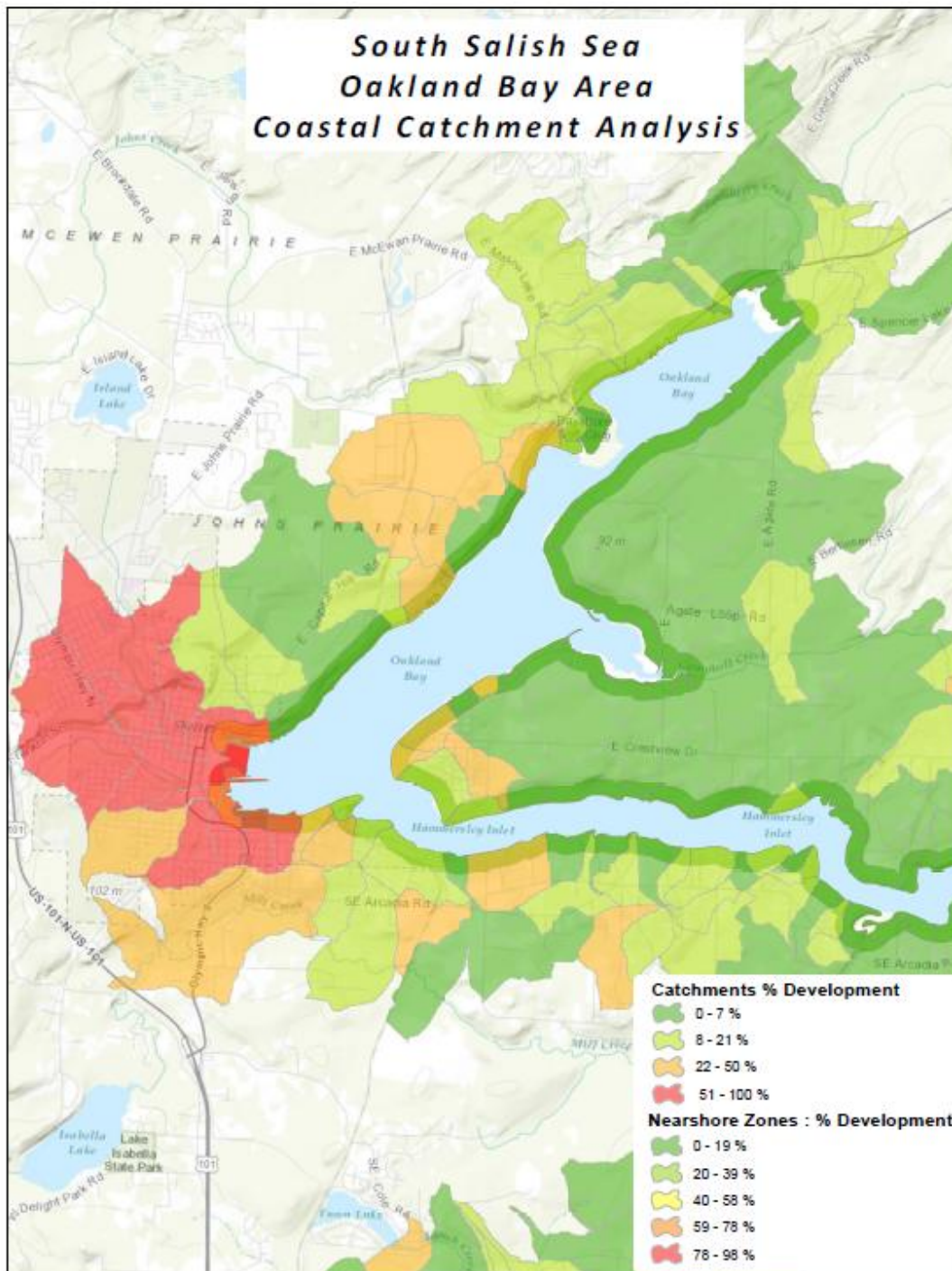
South Salish Sea Coastal Catchment Analysis



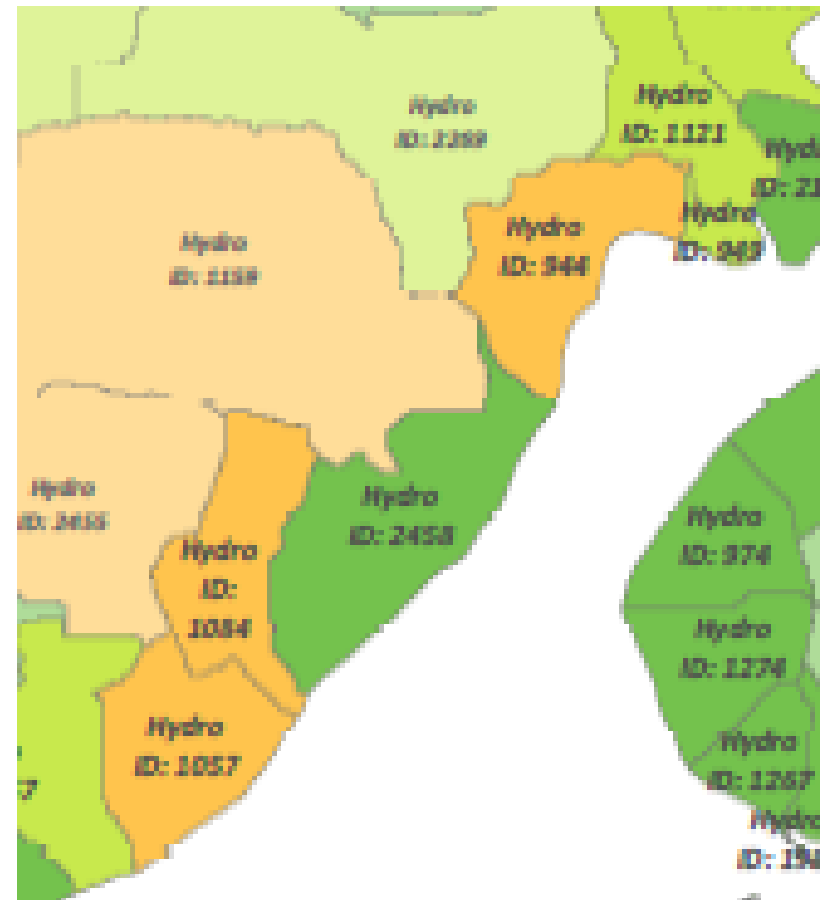
NOAA Coastal Change Analysis Program

% Land Cover Change

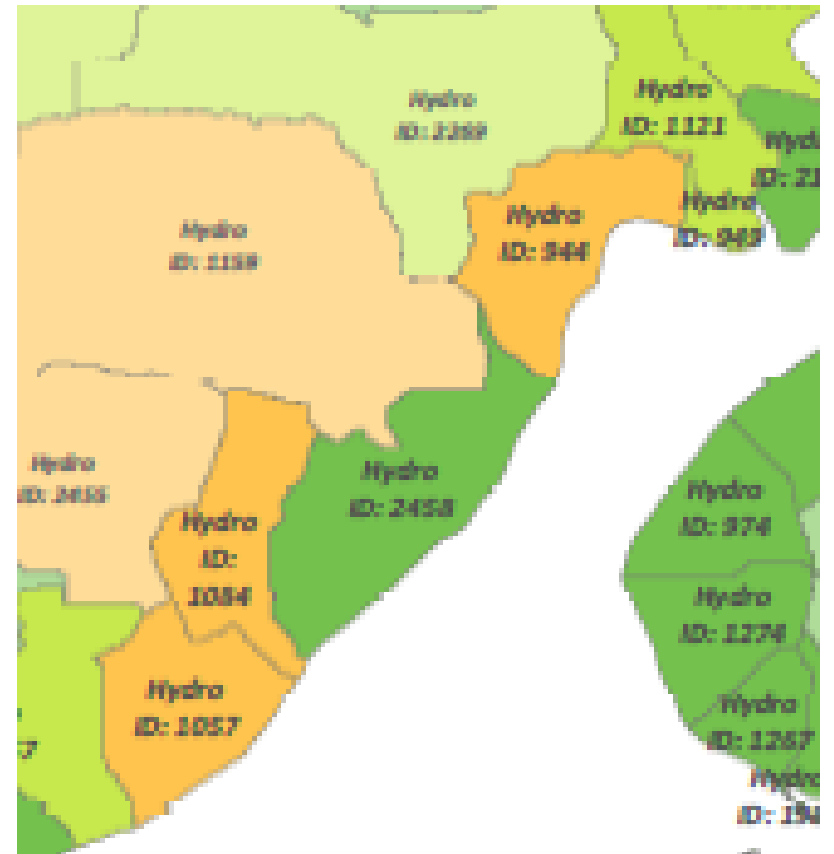
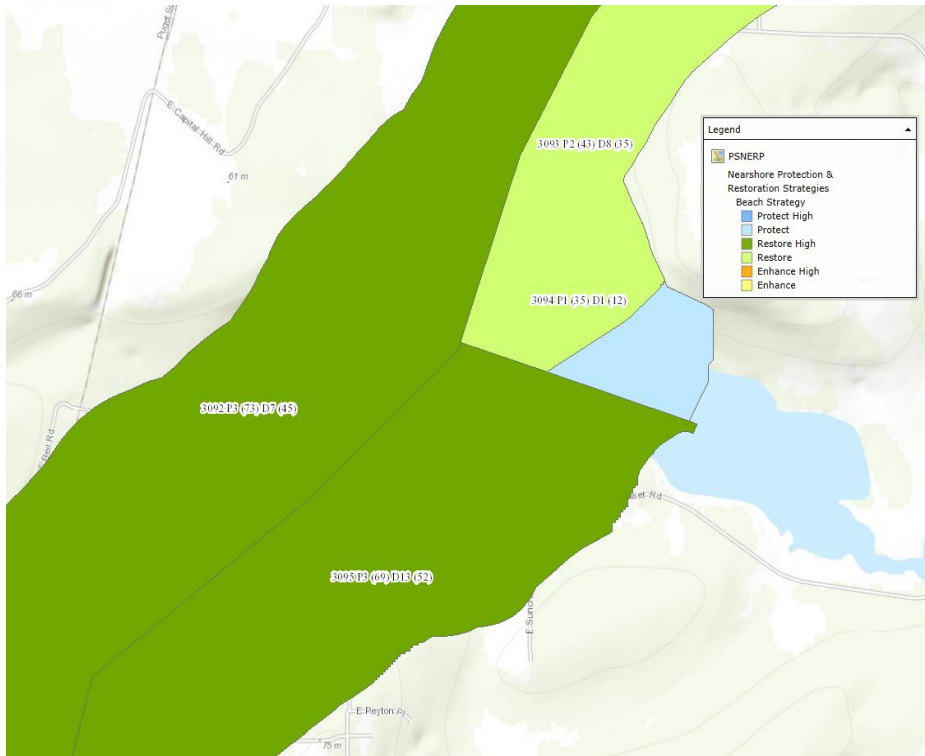
South Salish Sea Oakland Bay Area Coastal Catchment Analysis



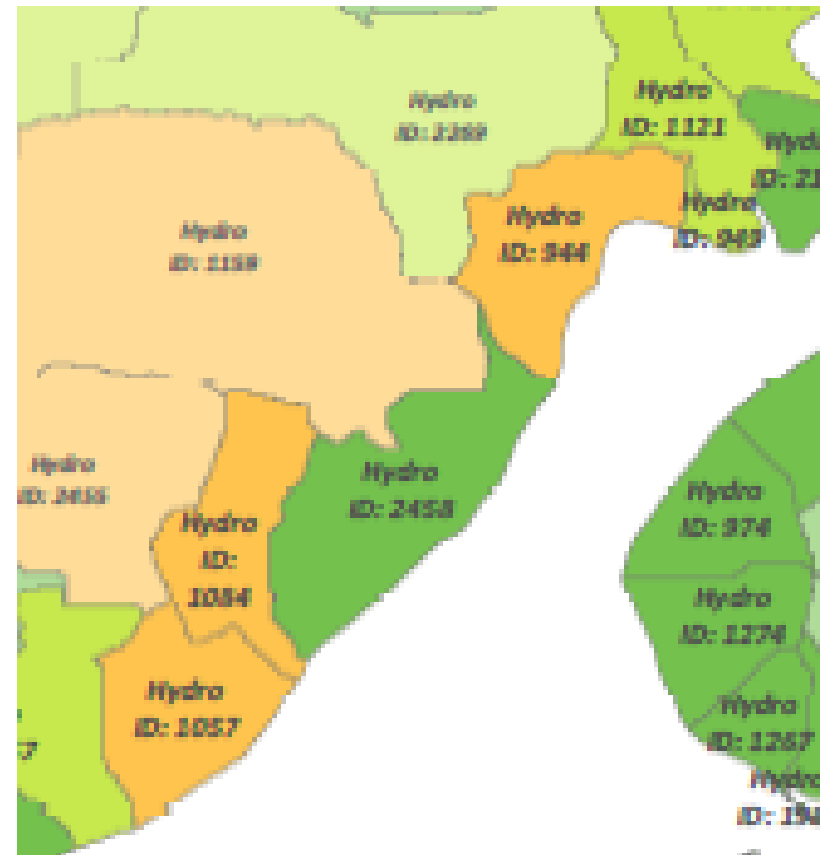
Shoreline Survey



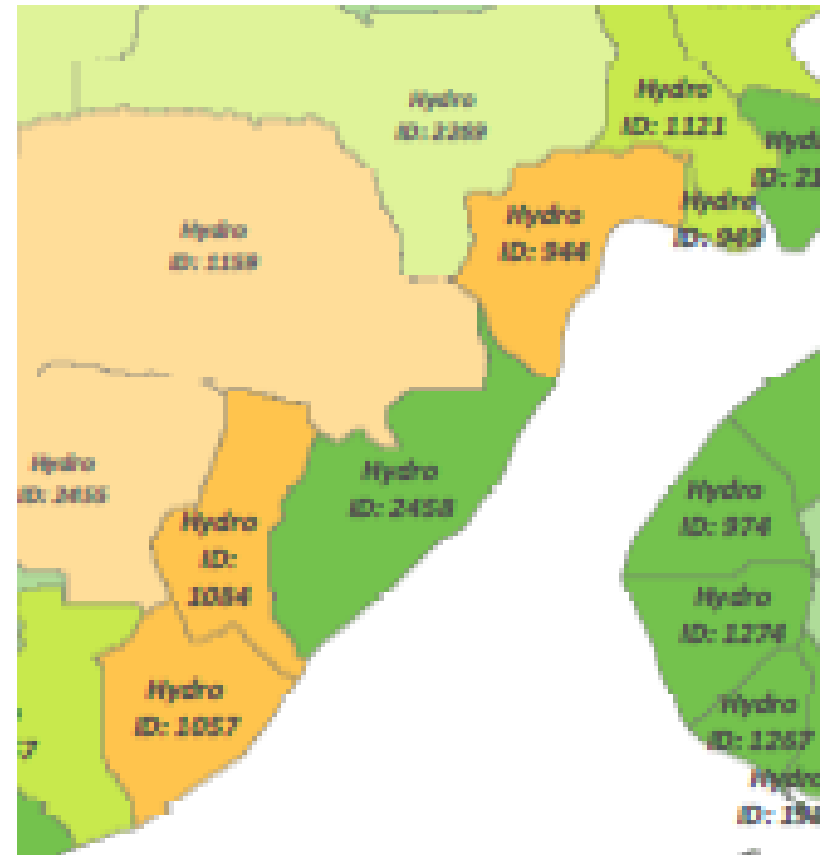
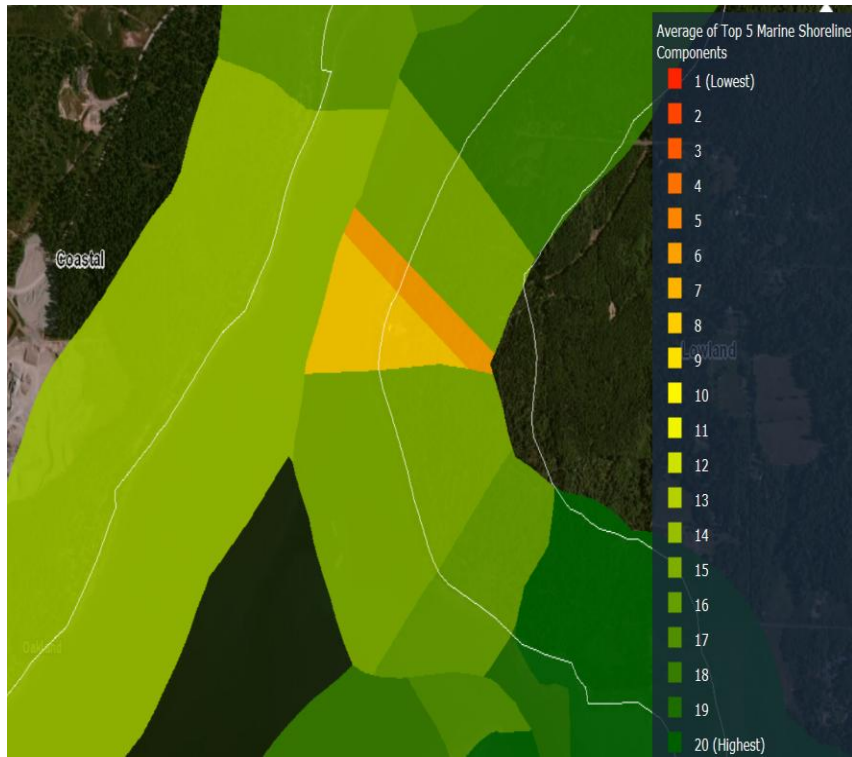
PSNERP



Ecology Water



WDFW Wildlife



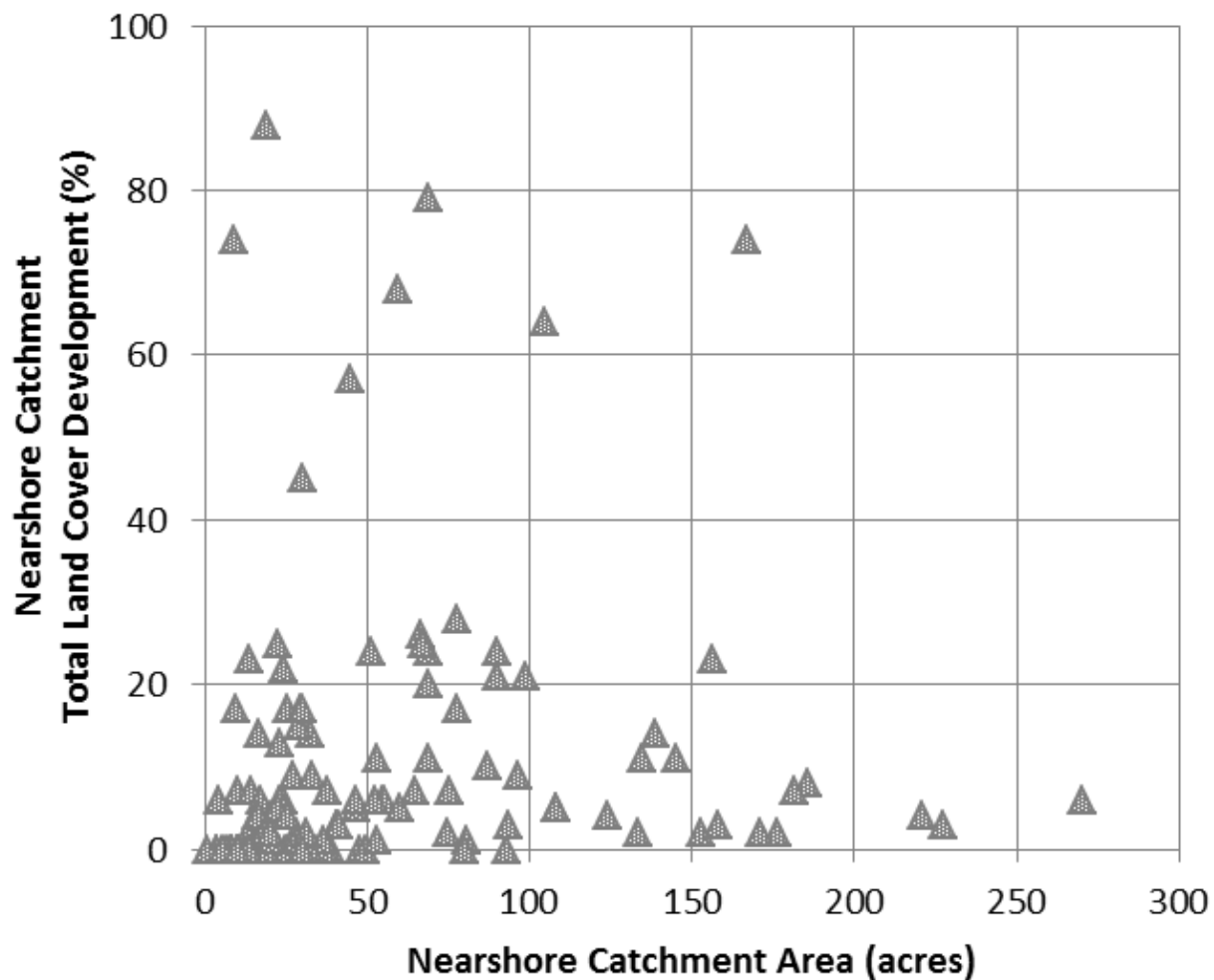
Upland Attributes

- 303D
- MTCA- cleanup
- Wetlands- %
- Streams
- Protected land- %
- Development- %

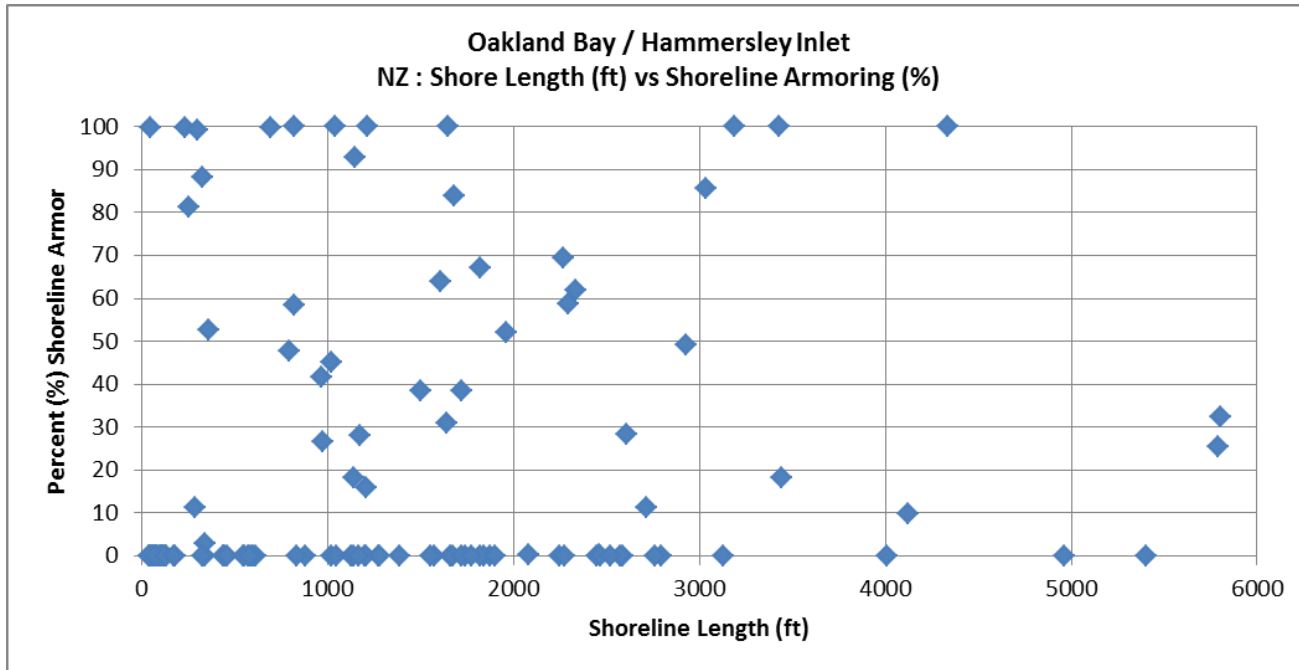
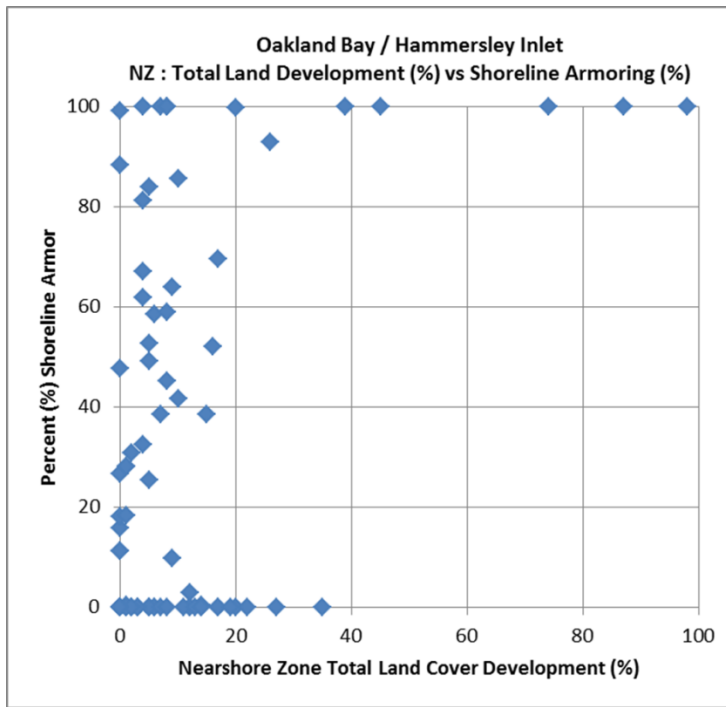
Shoreline Attributes

- Pocket estuary
- Forage fish- %
- Sediment
- Vegetation- %
- Armoring- %
- Fill- %
- Marinas
- Docks
- Outfalls
- Development- %

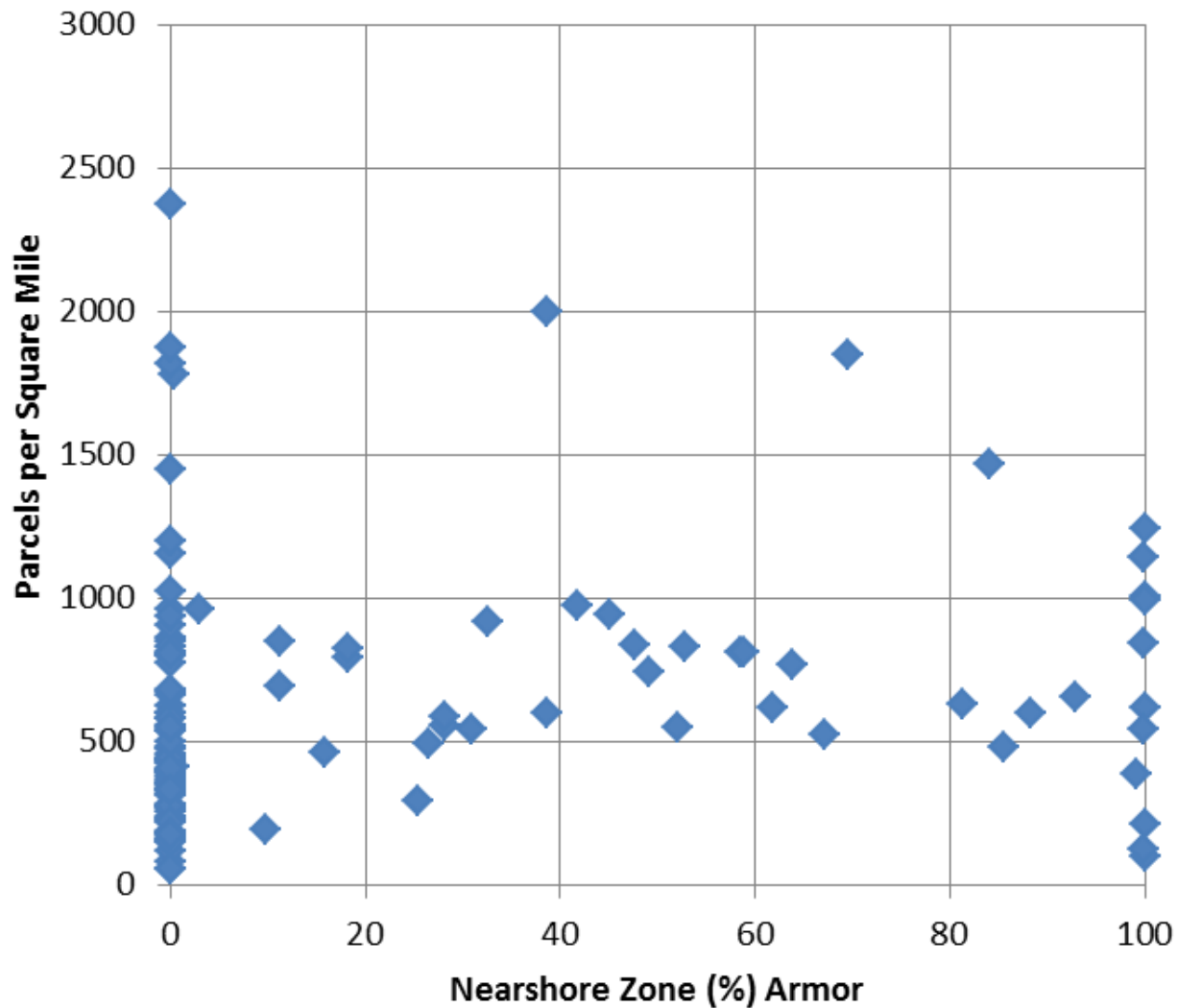
**Corresponding Scores for Total Land Cover Development (%)
Between Nearshore Catchments
and Respective Nearshore Zones**



Nearshore Zones Armoring

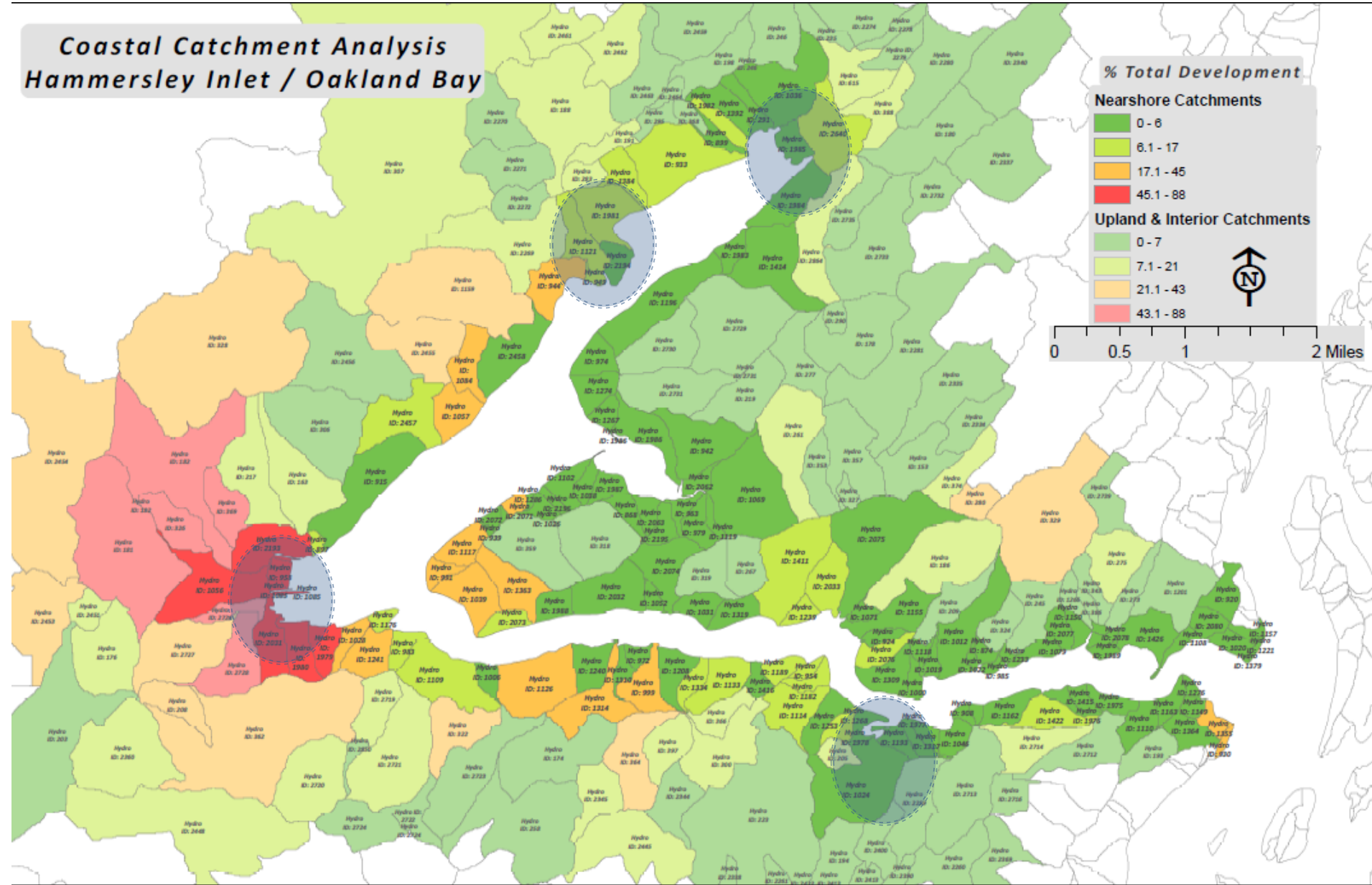
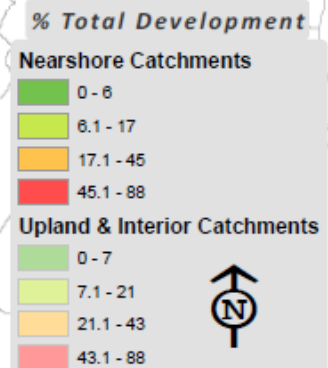


Oakland Bay / Hammersley Inlet
Parcel Density vs Shoreline Armoring (%)

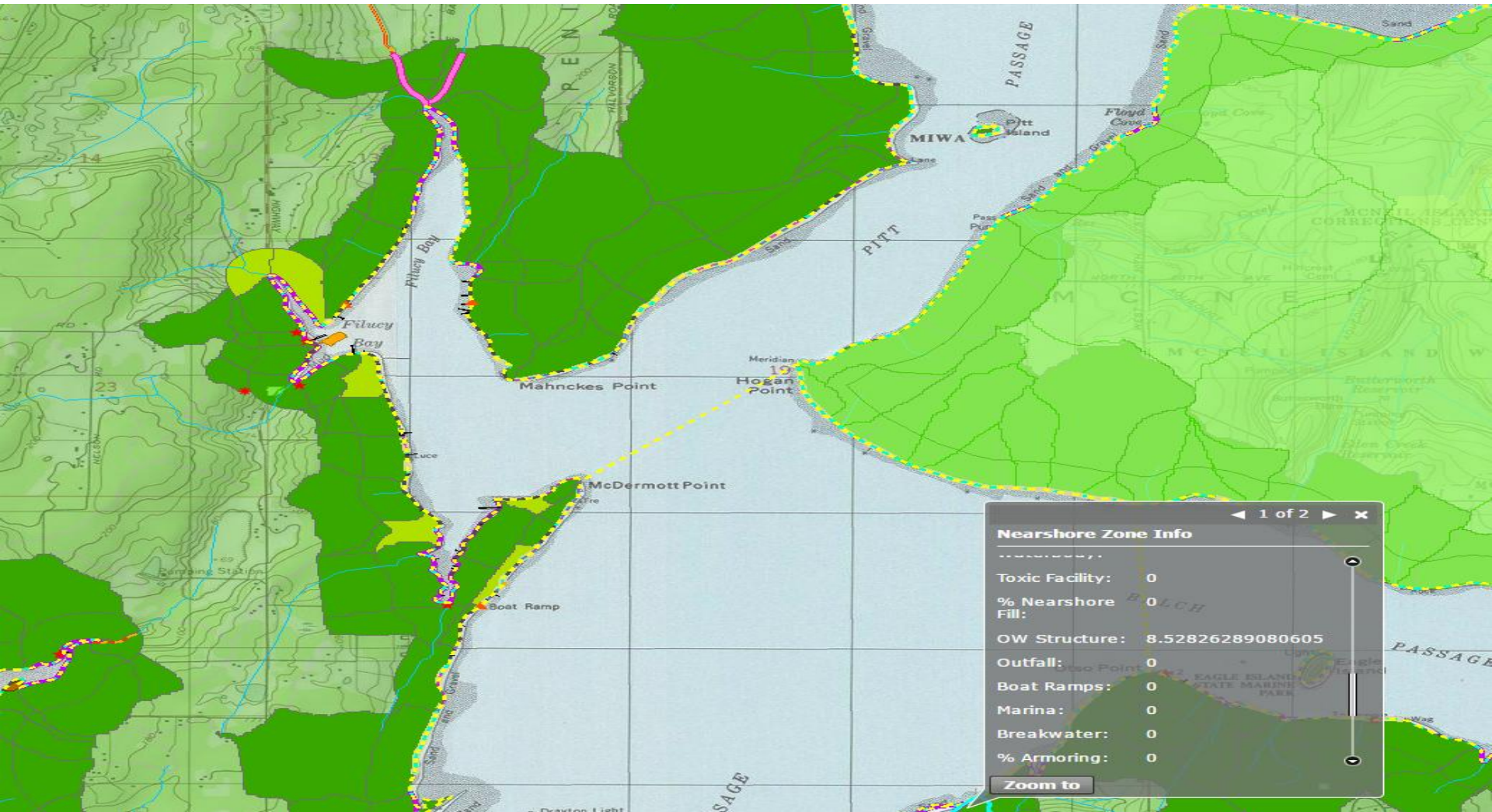


Salmon Tier 1 Watersheds

*Coastal Catchment Analysis
Hammersley Inlet / Oakland Bay*



Website



South Sound Strategy

- Identify ecosystem recovery target status
- Determine limiting habitat features and watershed processes
- Identify high priority areas for restoration and preservation
- Identify and prioritize actions